

EUTECT SOFTWARE FAMILY

MACHINE OPERATION MADE EASY

PETER: PARAMETER RECOVERY



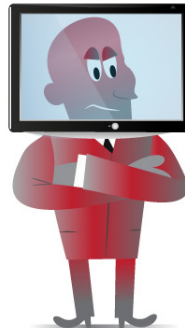
Peter backs up all the machine's process parameters and jobs at the touch of a button. If something has been adjusted or a product has been removed from the EMI, Parameter-Peter can restore everything on request.

MELLI: MACHINE EVENT LOG LIST



MELLi records errors captured during machine operation and displays them in a window. Past events are displayed in an additional text box and can be viewed by you at any time.

ULI: USER LOGIN



With ULi, user login and management is made easy. Different user levels allow you to assign different rights for operating the software, from operator to setter up to administrator. Furthermore, the user login can be provided with an automatically adjustable logoff function.

ERICA: EUTECT RECORDING INSPECTION CAMERA



ERICa displays Live Images to you, so that you can monitor and teach the process from different perspectives. In addition, an NOK process can be stored automatically. Manual process recordings are also possible. For the laser optics, ERICa can display diverse cross-hairs, which facilitates the operation. (only in combination with chargeable hardware.)

SARA: SURVEILLANCE AND RECEIPT ASSISTANT



All recipe parameters can be managed with SaRA. It saves all parameter changes and defined PLC values in a database, so that the effects on the process are documented.

EMI: EUTECT MACHINE INTERFACE



Product management

- Products can be created, edited, copied and deleted
- Assignment of products to WT codes (5-bit coding or via EMA)
- Management of jobs and solder height control
- Display of sequence programmes (DAT, RC & NC)

JobCreator

- Jobs can be edited graphically (Touch & Move), i.e. adding new points/lines and editing points/lines
- Setting of various parameters: X, Y, Z positions + two additional axes, rotary (D) and infeed (E) axis, plunge in & out speed, traverse speed, dwell time (process time or process parameters), index (sequence), MFN (multiple use - a job can be executed repeatedly shifted in X, Y, and Z).
- Teach mode: Selected coordinates (X, Y, Z, D, E) can be approached to correct and adopt current axis positions or to add new elements to the job from the current position

DAT-Editor

- Manual jobs can be created by hand in the DAT editor

LARS: LASERREGULATION AND CONTROL



LaRS sets new standards in precise and user-friendly parameter setting for laser soldering processes. The graphical user interface enables intuitive input and adjustment of all relevant process parameters, including the wire feed parameters of the EUTECT SWF. Thanks to the visual presentation, even complex settings can be controlled easily and comprehensibly.

Your benefits:

- Intuitive parameter input: The graphical user interface allows all parameters to be adjusted quickly and easily.
- High efficiency through visualization: All process parameters are clearly displayed so that optimizations can be made directly and easily.
- Adaptable temperature control: With up to 250 freely parameterizable temperature and power profiles as well as individually adaptable pre- and post-heating profiles, the control system can be flexibly adjusted to any requirement.

LaRS enables flexible and precise control that increases process reliability and efficiency. In combination with our patented SWF wire feeder and coaxial optics, LaRS creates reliable, easy-to-control regulation for optimum soldering results – simply, quickly and reproducibly.

MARCO: MACHINE REMOTE CONTROL



MaRCo makes your machine controller mobile, because MaRCo helps you to set up freely configurable interfaces for the use of the machine controller via a mobile unit. Various machine parameters can thereby be controlled and displayed:

- Axis movements & -states
- Cylinder positions
- Parameters and values
- Error acknowledgement

(only in combination with a handheld panel)

ERWIN: EUTECT REPORTING WINDOW



ERWin selects the required data of the assistants and displays these clearly in a window. Relevant reports can be generated and printed out or saved as PDF at the push of a button.

EMA: EUTECT MANUFACTURING ASSISTANT



EMA knows all details about the machine, and on request can inform in time about necessary maintenance instructions. It is also possible to realise complex customer-specific MES-links over a standardised interface.

EVA: EUTECT VERIFY & AOI



No component gets past EVA unnoticed. The automatic optical inspection checks all components for possible defects. Any abnormalities can be closely examined again at the Verify station to verify the assessment of the previous inspection. (only in combination with AOI system)

ELMAR: EUTECT LANGUAGE MANAGER



ELMar reads out all texts from the PLC and from this creates an Excel table that can be used for the translation. As a result, the software can be quickly and easily prepared for other languages.



Alongside the continuous further development of our machines, we work constantly on user-friendly software solutions. Besides the operating and automation software of the machines, these also include diverse software modules that facilitate the use of the machines. We constantly observe the market and conduct exchanges with our customers, in order to generate ideas for new software modules. We implement these in our in-house development department.

Our software modules are part of the EUTECT modular kit and can be selected by you according to application and requirement. All software modules are oriented to our hardware components and can be tested on our premises.

In the EUTECT Technology Centre you can get an idea of our software solutions. In customer-specific evaluations we present to you the operating software, as well as the modules suitable for your process. These modules enable you to work even faster and more efficiently with our machines.